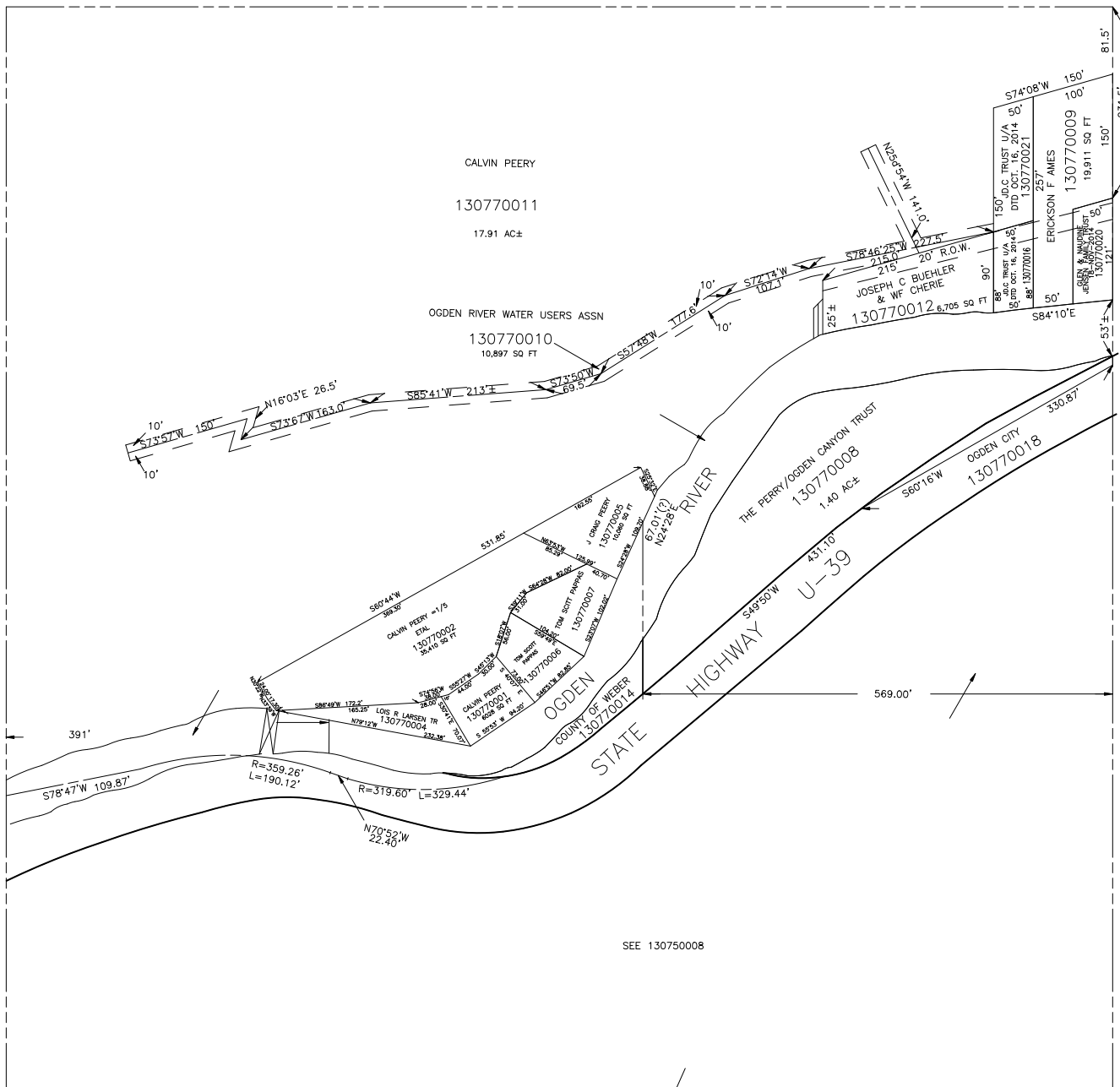


N.W. 1/4 OF S.W. 1/4
SECTION 24, T.6N.,R.1W., S.L.B. & M.

TAXING UNIT: 58

IN WEBER COUNTY
 SCALE 1" = 100'

SEE PAGE 75



SEE PAGE 75

SEE PAGE 76

NOTE: ROAD & RIVER APPROXIMATELY LOCATED
 NO SPECIFIC DATA ON RECORD.